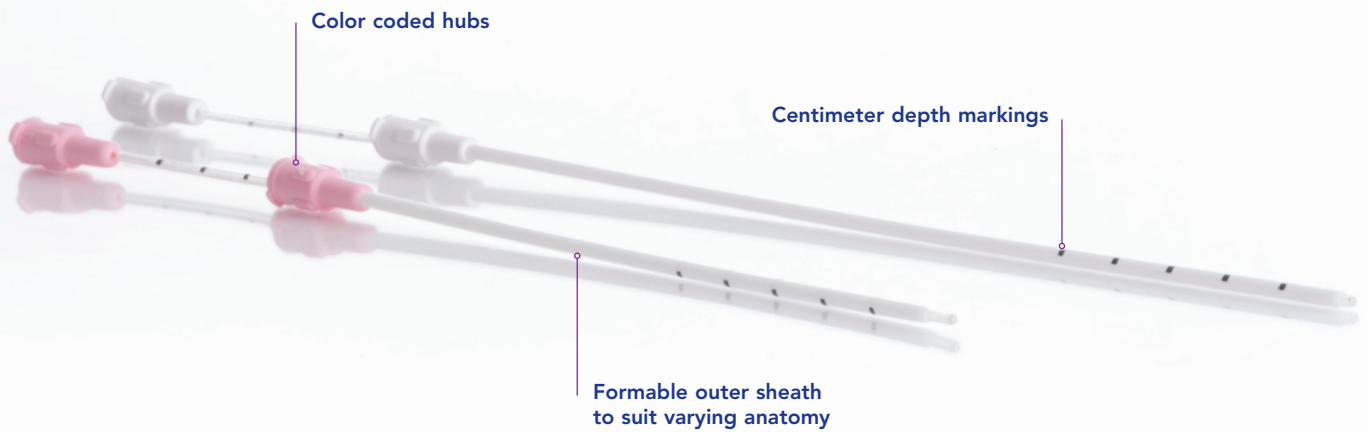




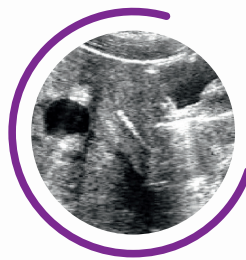
EMBRYO TRANSFER BY WALLACE®

# Wallace SureView®

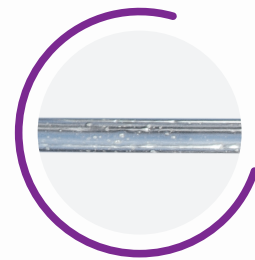
## Ultrasound Visible Embryo Transfer Catheters



Cross section illustrating micro bubbles and smooth internal lumen



SureView catheter shown within the uterus



SureView micro bubbles are present throughout catheter length



CooperSurgical Fertility Companies

ORIGIO a/s | origio.com

**CooperGenomics**<sup>SM</sup>  
a CooperSurgical company

globalsupport@coopergenomics.com  
coopergenomics.com

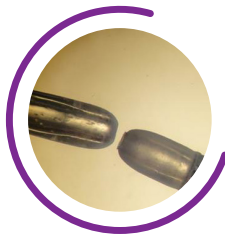
## The unique SureView catheter allows full visibility under ultrasound while incorporating the hand crafted tip of the widely successful Classic catheter.

- Visible under ultrasound from hub to tip<sup>1</sup>
- More accuracy and confidence when positioning catheter tip within uterus for embryo transfer
- Combines benefits of the Classic range with SureView patented technology
- Compatible with the Wallace Malleable Stylet for difficult transfers
- The SureView range is fully compatible with the Classic range
- The only hand crafted catheter available in the world. Ensures tips are perfectly rounded for gentle insertion
- Every catheter has been inspected under magnification to ensure consistent quality
- Formable, non-friction sheath, ensuring a smooth transfer and the ability to conform to the contours of the cervical canal

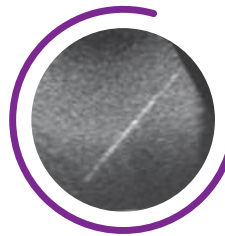
Product Configurations
SureView Embryo Transfer (18cm/23cm)
SureView Trial Transfer (18cm/23cm)
Malleable Stylet - for difficult transfer (18cm/23cm)

1. Coroleu, B et al. (2006). Effect of using an echogenic catheter for ultrasound-guided embryo transfer in an IVF programme: a prospective, randomized, controlled study Human Reproduction. Advanced Access. doi:10.1093/humrep/del045

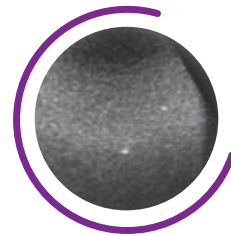
### Wallace SureView catheter ultrasound visible tip and competitor catheter tips under the same microscope



Wallace catheter above left, competitor catheter above right



SureView full catheter view under ultrasound in phantom uterus



Competitor's catheter tip only visible under ultrasound

Technical Information	Wallace Classic / Wallace SureView
Inner catheter (ID)	0.76mm
Inner catheter (OD)	1.52mm
Outer sheath (OD)	2.3mm
Volume of catheter not including hub (18cm catheter)	0.081ml (81µl)
Volume of catheter not including hub (23cm catheter)	0.104ml (104µl)
Volume per cm length of catheter	0.0045ml (4.5µl)
Suggested loading volume	0.5 to 1cm = 2.25 to 4.5µl
Stylet (OD)	1.52mm
Stylet protrusion from outer sheath	2.0mm

CE marked in compliance with EU medical device directions

### Product Compatibility and Order Codes

	Wallace SureView	
	CE118 Quantity: 10 Soft 18cm Ultrasound	CE123 Quantity: 10 Soft 23cm Ultrasound
Compatible with:		
<b>1816ST</b> Quantity: 10 Rigid Stylet for introducing the 18cm	✓	
<b>1816NST</b> Quantity: 10 Rigid Stylet for introducing the 23cm		✓
<b>CE418</b> Quantity: 10 Trial transfer catheter blind end (18cm) ultrasound visible	✓	
<b>CE423</b> Quantity: 10 Trial transfer catheter blind end (23cm) ultrasound visible		✓

✓ = Compatible



CooperSurgical Fertility Companies

ORIGIO a/s | origio.com

**CooperGenomics**<sup>SM</sup>  
a CooperSurgical company

globalsupport@coopergenomics.com  
coopergenomics.com