



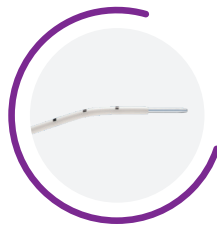
EMBRYO TRANSFER BY WALLACE®

Wallace Sure-Pro® & Sure-Pro Ultra®

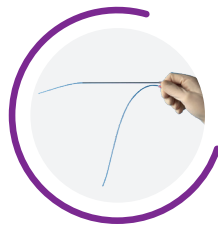
Supported Embryo Transfer Catheters



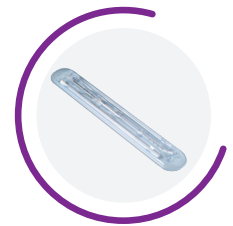
Soft hand-crafted tip to facilitate a smooth passage through the cervix



Pre-formed angle on outer sheath



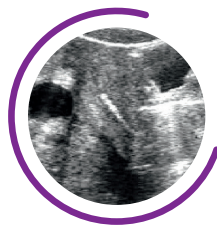
Supported Wallace Sure-Pro compared with Wallace Classic



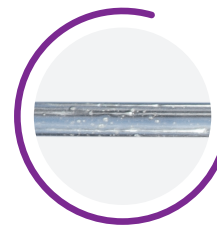
Sure-Pro supplied in a procedural tray to maintain sterility while handling



Cross section illustrating micro bubbles and smooth internal lumen



SureView catheter shown within the uterus



SureView micro bubbles are present throughout catheter length



CooperSurgical Fertility Companies

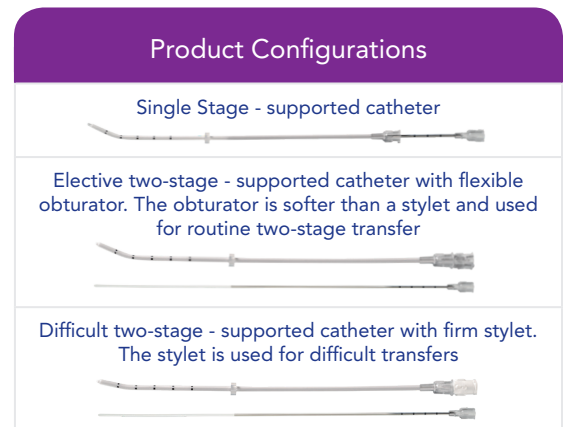
ORIGIO a/s | origio.com

CooperGenomicsSM
a CooperSurgical company

globalsupport@coopergenomics.com
coopergenomics.com

The Sure-Pro and Sure-Pro Ultra range feature the hand-crafted inner catheter tip of the Wallace Classic, with the added benefit of a supported inner catheter to improve control during handling. The Sure-Pro Ultra range also features the unique echogenic properties of SureView technology.

- Supported inner catheter for increased control during handling and insertion
- Pre-formed curve on outer sheath to help navigate the cervical canal
- Adjustable silicone marker for depth guidance and tip orientation
- Available with a soft obturator and firm stylet to suit various techniques and patient anatomies
- Formable outer sheath allowing for accentuation or smoothing of the pre-formed curve



Technical Information	Wallace Sure-Pro / Wallace Sure-Pro Ultra
Inner catheter (ID)	0.76mm
Inner catheter (OD)	1.52mm
Outer sheath (OD)	2.5mm
Volume of catheter not including hub (23cm catheter)	0.104ml (104µl)
Volume per cm length of catheter	0.0045ml (4.5µl)
Suggested loading volume	0.5 to 1cm = 2.25 to 4.5µl
Stylet (OD)	1.52mm
Stylet protrusion from outer sheath	2.7mm

Product Compatibility and Order Codes:

	Sure-Pro				
	PP623 Quantity: 10 Classic, soft 23cm Supported Single-Stage	PPB623 Quantity: 10 Classic, soft 23cm Supported Elective Two-Stage	PPS623 Quantity: 10 Classic, soft 23cm Supported Two-Stage - Difficult	PPB623X Quantity: 10 Triple Pouched Classic, soft 23cm Supported Elective Two-Stage	PPS623X Quantity: 10 Triple Pouched Classic, soft 23cm Supported Two-Stage - Difficult
Obturator included within pack		✓		✓	
Stylet included within pack			✓		✓

	Sure-Pro Ultra				
	PE623 Quantity: 10 SureView, soft 23cm Ultrasound Supported Single-Stage	PEB623 Quantity: 10 SureView, soft 23cm Ultrasound Supported Elective Two-Stage	PES623 Quantity: 10 SureView, soft 23cm Ultrasound Supported Two-Stage - Difficult	PEB623X Quantity: 10 Triple Pouched SureView, soft 23cm Ultrasound Supported Elective Two-Stage	PES623X Quantity: 10 Triple Pouched SureView, soft 23cm Ultrasound Supported Two-Stage - Difficult
Obturator included within pack		✓		✓	
Stylet included within pack			✓		✓

✓ = Compatible

CE marked in compliance with EU medical device directive

Copyright CooperSurgical, Inc • Order No. 60010368 • Version 1-AUS; June 4, 2018. All information correct at time of print. Specifications are subject to change without notice or obligation on the part of the manufacturer.



CooperSurgical Fertility Companies

ORIGIO a/s | origio.com

CooperGenomicsSM
a CooperSurgical company

globalsupport@coopergenomics.com
coopergenomics.com